

Termination

50Ω, DC to 2 GHz

NEW!

KARN-50L



CASE STYLE: LL718
CONNECTOR: N type male
PRICE: \$9.45 ea.
QTY: (1-9)

Maximum Ratings

Operating Temperature	-55°C to 100°C
Storage Temperature	-55°C to 100°C

Features

- wideband coverage, DC to 2000 MHz
- 2 watt rating to 70°C ambient
- rugged construction

Applications

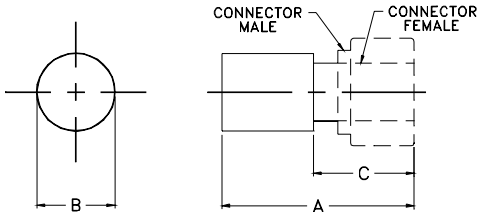
- cellular communications
- satellite communications
- test set-up

Electrical Specifications

FREQUENCY (MHz)	IMPEDANCE (OHMS)	RETURN LOSS (dB) MIN.			CASE STYLE	POWER RATING* (W)
		DC-500	DC-1000	DC-2000		
DC - 2000	50	35	30	21	LL718	2

* At 70°C, derate linearly at 0.025W/°C to 1.25W at 100°C.

Outline Drawing



Outline Dimensions (inch mm)

A	B	C	wt.
			grams
1.10	.69	.68	30.0
27.94	17.53	17.27	

Typical Performance Data

FREQUENCY (MHz)	RETURN LOSS (dB)	
	\bar{X}	σ
0.03	43.09	0.09
52.53	65.29	3.90
97.53	60.64	4.12
502.53	50.90	6.45
802.53	46.10	5.58
997.53	43.25	4.54
1297.52	40.02	3.41
1500.02	38.23	2.80
1800.01	36.13	2.14
2002.52	34.78	1.78

KARN-50L
RETURN LOSS

